

## DATASHEET

### PART NUMBER

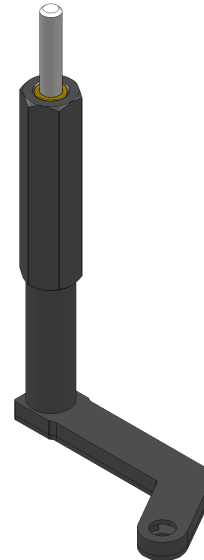
## WES975-HX-QC

### Pancake Drill Attachment Quick Change Shaft Right Hand 2.63 in Offset

Offset L-Type Extended Flat Angle Drill Attachment

### WEBSITE

<https://www.wesconusa.com/products/WES975-HX-QC>



\* The image represents the general look of the series. Actual product may vary based on options selected.

For access to very tight areas. The WES900 series is designed to fit 1/4"-28 threaded drill bits and has a 1/4" round shaft. Choose from straight, right hand, or left hand styles with various offsets. Optional tri-flats or quick change shafts are available. A 1/2" round handle is standard, with an optional 11/16" hex handle available. Also known as a L-Type drill attachment, drill offset, drill right angle attachment, pancake drill attachment, or drill offset adapter.

## SPECIFICATIONS

Shaft	Quick Change
Handle	11/16 Hex
Spindle Thread	1/4-28
Spindle Offset	.281 in
Drill Offset	2.63 in
Overall Length	3.16 in
Overall Height	5.45 in
Thickness	.250 in
Width	.563 in
Style	Right Hand
Country of Origin	USA

ADDITIONAL IMAGES AND DRAWINGS

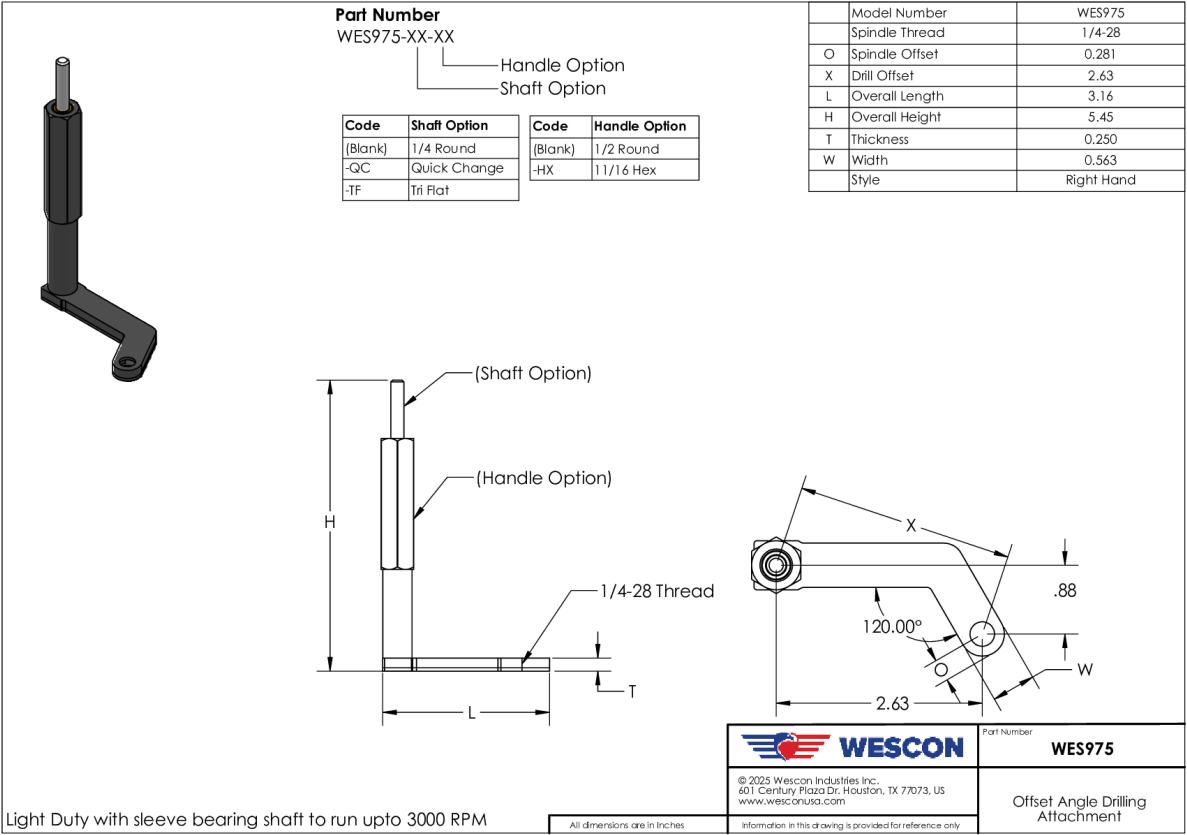


Image 1